

# MONTHLY MEMBERSHIP PROGRESS REPORT

LOCATION ENGLAND

District 105CN

Results as of: 4/30/2023

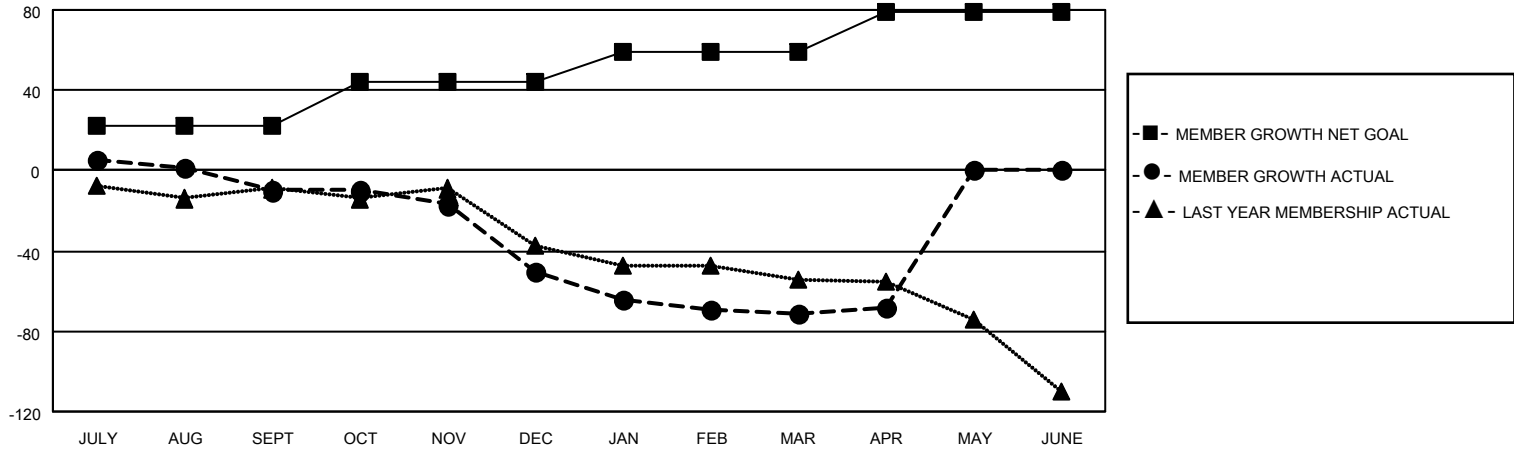
Clubs			
RESULTS FOR 2022-2023			
QUARTER	NEW CLUB GOAL	NEW CLUBS	DROPPED CLUBS
JULY/AUG/SEPT	0	0	1
OCT/NOV/DEC	0	0	1
JAN/FEB/MAR	0	0	4
APR/MAY/JUNE	1	0	0

Members			
RESULTS FOR 2022-2023			
QUARTER	MEMBER GROWTH NET GOAL	MEMBER GROWTH ACTUAL	DROPPED MEMBERS ACTUAL (including transfers)
JULY/AUG/SEPT	22	28	31
OCT/NOV/DEC	22	28	62
JAN/FEB/MAR	15	20	35
APR/MAY/JUNE	20	7	4

**GOALS AND ACTUAL NEW CLUBS CUMULATIVE**



**GOALS AND ACTUAL MEMBERS CUMULATIVE**



**DROPPED CLUBS: 6**

**34 CLUBS OF 89 ADDED 1 OR MORE NEW MEMBERS**

**GENDER DISTRIBUTION**

MALE	782 (66.95%)
FEMALE	386 (33.05%)
NON BINARY	0 (0.00%)
PREFER NOT TO ANSWER	0 (0.00%)

**DROPPED MEMBERS**

[CLICK HERE FOR CUMULATIVE MEMBERSHIP DATA](#)

DECEASED	17
CLUB CANCELLED	0
OTHER	115
<b>TOTAL</b>	<b>132</b>

TOTAL FAMILY UNIT MEMBERS 214

FAMILY MEMBERS PAYING HALF DUES 110